

A large, stylized graphic of white branching lines, resembling a tree or a network, set against a dark blue background. The lines are thick and have a slightly irregular, hand-drawn appearance. A semi-transparent grey rectangular box is overlaid on the right side of the image, containing the main title text.

Optos *Advance* Tips and Tricks 2.0

Table of Contents

Your Mouse and Optos*Advance*:
working together for an efficient
image review

Blending Function

Image Enhancement

Smartzoom Function

Adjusting Gamma

Adjusting Contrast



L Button
< Zoom >

R Button
< PAN >

1

L Button
↑ Shift
< RG Blend >

2

R Button
↑ Shift
< Enhance >

Middle Wheel
< Scroll Images >

3

(Click Button) = On/Off Smartzoom

Middle

4

(Click hold Drag) = Gamma

5

Wheel Drag + Shift
< Contrast/Brightness >

1 Blending Function

Optos*Advance* allows you to easily move between the 100% red free channel (sensory retina) and the 100% green free channel (choroid) using your mouse from the **optomap** color rg image.

From within the desired Patient Study, hold down your Shift key and the left mouse button. Drag your mouse away from you to perform the blending process to the red channel and toward you to the green channel.

To return back to the initial blend of the lasers, you can follow the same process and move your mouse in the opposite direction.

The image titles in the upper right-hand corner will allow you to view the percentages for each laser.

You may also press the Reset button from within the software.

2 Image Enhancement

To sharpen the details of your image, you can use the Enhance function provided within the software.

To perform this function with your mouse, simply hold down your Shift key and the right mouse button.

Drag the mouse away from you to sharpen the details and back toward you to lessen the image sharpness.

3 Smart Zoom Function

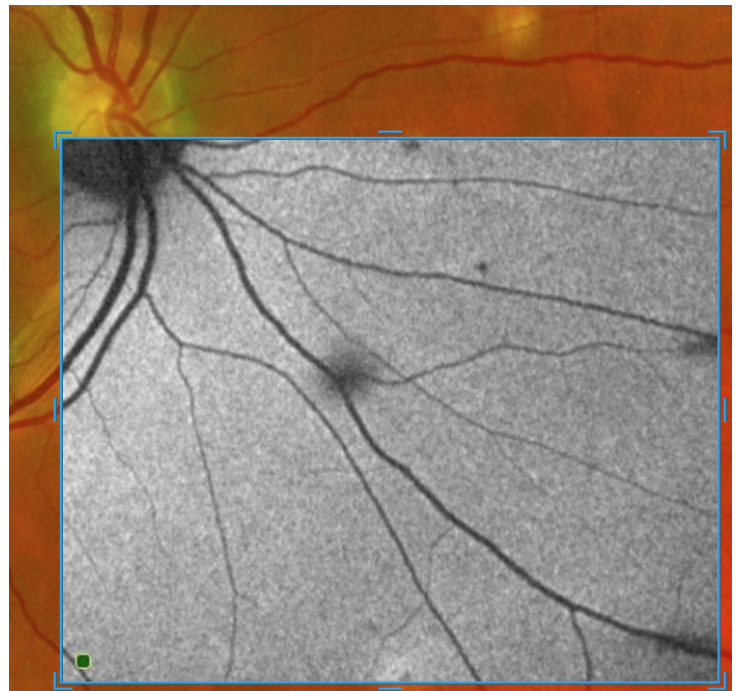
Smart Zoom allows you to zoom in on a particular area of your **optomap** image or overlay an image of a different modality, or different one performed on a different date, into the field for ease of comparison.

To initiate Smart Zoom on your chosen Patient Study, click on your mouse scroll wheel. A box will appear, which you can drag anywhere you wish on the image as well as resize as needed.

Select an image of another modality from your Series menu on the lefthand side of the screen and drag into the box.

Alternatively, if you wish to add a prior visit image, select from the timeline at the top of the screen and drag into the box.

If the images are properly aligned, you will see a green square in the bottom lefthand corner.



Smart Zoom Function con't

To move between the overlay and the underlay images, hold down your scroll wheel and move your mouse up or down, as appropriate.

To remove the Smart Zoom box, move your mouse outside of the Smart Zoom area and single click on your scroll wheel.

4 Adjusting Gamma

Gamma refers to the brightness of an image, which you are able to easily adjust in Optos*Advance* using a quick mouse shortcut.

Simply click and hold down on your mouse scroll wheel and drag the mouse away from you to brighten the image.

To darken the image, perform the same mouse function but drag your mouse toward you instead.

To return your image to its initial brightness, perform the function outlined above but move your mouse in the opposite direction until it is at your preferred brightness level.

The image labels in the bottom left-hand corner of the screen will allow you to view the Gamma levels.

Alternatively, you may press the Reset button from within the software.

5 Adjusting Contrast

The Contrast function within Optos*Advance* allows you to adjust the difference in brightness between light and dark areas of the **optomap** image.

To adjust this using your mouse, press your Shift key and then press and hold your mouse scroll wheel.

Moving the mouse away from you will increase the contrast while pulling your mouse toward you will decrease the contrast.

To return your image to its initial contrast, perform the function outlined above but move your mouse in the opposite direction until it is at your preferred contrast level.

The image labels in the bottom left-hand corner of the screen will allow you to view the Contrast levels.

Alternatively, you may press the Reset button from within the software.

About Optos

When a five-year-old boy was blinded after a regular eye exam failed to spot a retinal detachment, his father made it his life's work to help eye care professionals by revolutionizing retinal imaging. Optos was founded by Douglas Anderson with the goal to make a patient-friendly device to capture a digital ultra-widefield image of the retina. Today, millions of patients around the world have benefited from **optomap** retinal imaging.

Our core products produce high resolution **optomap** images of 82% or 200° of the retina, something no other imaging device is capable of in a single comfortable capture. The most recent innovation from Optos integrates ultra-widefield retinal imaging and image-guided Optical Coherence Tomography (OCT). This combined device facilitates the early detection, management and effective treatment of disorders and diseases evidenced in the retina such as retinal detachments and tears, glaucoma, diabetic retinopathy, and age-related macular degeneration. More than 2,500 published and ongoing clinical trials as well as thousands of case studies and testimonials show the long-term value of **optomap** imaging and OCT in diagnosis, treatment planning, and patient engagement.

